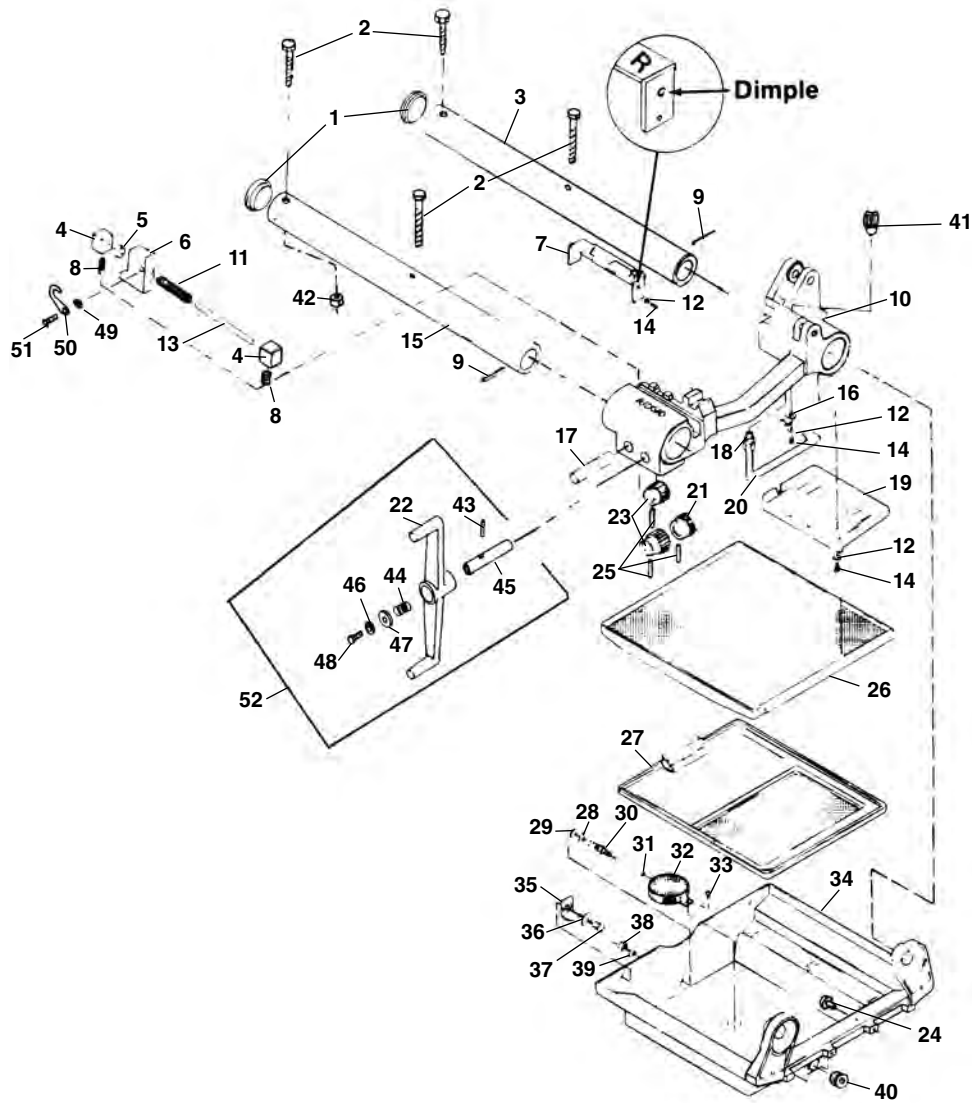


### Carriage and Chip Pan

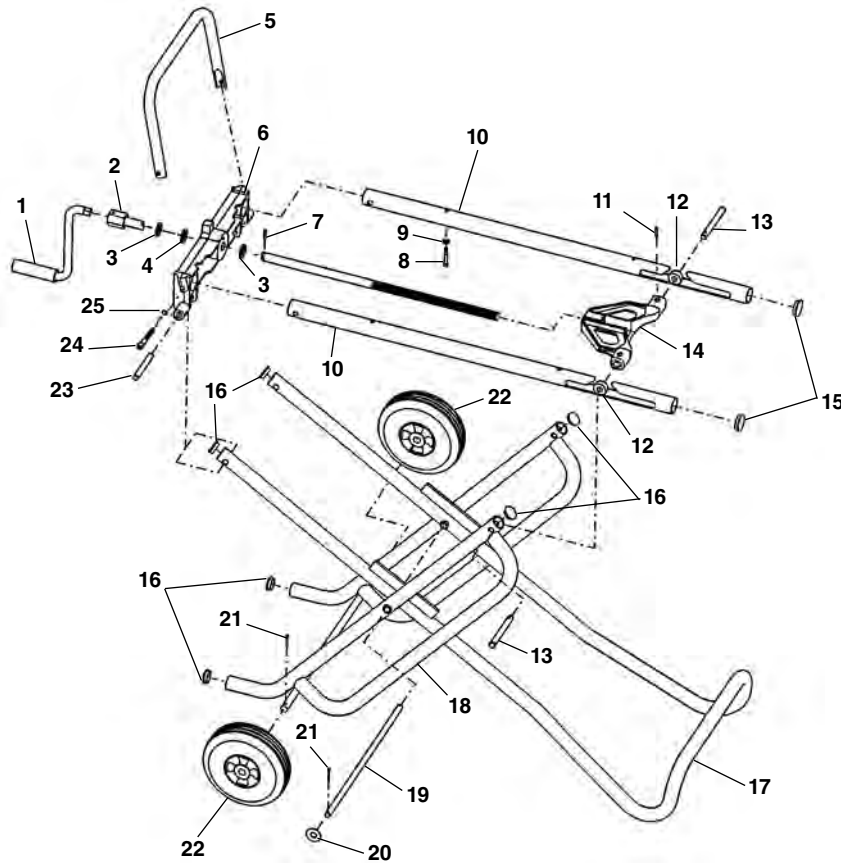


**NOTE: Order parts by Catalog Number only.  
DO NOT order by Reference Number.**

| Ref. No. | Catalog No. | Description  | Ref. No. | Catalog No. | Description                | Ref. No. | Catalog No. | Description                     |
|----------|-------------|--|----------|-------------|----------------------------|----------|-------------|---------------------------------|
| —        | 49992       | Carriage Assembly (Includes Ref. #4-8, 10-14, 17, 21, 23, 25, 41, 49-52) | 17       | 26777       | Sine Bar/Pinion Shaft (2)  | 36       | 40930       | Lock Washer 3/8" (2)            |
| 1        | 26502       | Rail Plug (2)  | 18       | 26562       | Supply Line Fitting        | 37       | 26997       | Screw 3/8" - 16 x 3/4" (2)      |
| 2        | 40167       | Bolt 5/16" - 18 x 3 1/2" (4)   | 19       | 26772       | Drip Plate                 | 38       | 83545       | Hex Nut 3/8" - 16               |
| 3        | 49982       | Rear Rail  | 20       | 26812       | Die Lubrication Tube       | 39       | 26307       | Washer                          |
| 4        | 26787       | Guide Block (2)  | 21       | 26587       | Sine Bar Pinion            | 40       | 48337       | Drain Plug                      |
| 5        | 26792       | Sine Bar Spacer  | 22       | 40147       | Carriage Handwheel         | 26842    | 26842       | Drain Plug (Rubber-Early Style) |
| 6        | 40242       | Sine Bar   | 23       | 26572       | Carriage Pinion (2)        | 41       | 28462       | Ball Detente                    |
| 7        | 26912       | Sine Bar Cover Assembly  | 24       | 26837       | Stud (2)                   | 42       | 27517       | Lock Nut 5/16" - 18 (4)         |
| 8        | 26582       | Guide Block Spring (2)   | 25       | 74965       | Roll Pin 1/4" x 1 1/4" (3) | 43       | 74965       | Pin                             |
| 9        | 27052       | Roll Pin (2)   | 26       | 26802       | Draw Tray Assembly         | 44       | 89530       | Spring                          |
| 10       | 49987       | Carriage (Includes Ref. #41)   | 27       | 26807       | Insert Assembly            | 45       | 40157       | Handwheel Shaft                 |
| 11       | 26592       | Sine Bar Return Spring   | 28       | 27252       | Washer                     | 46       | 41582       | Lock Washer                     |
| 12       | 41592       | Washer #10 (2)   | 29       | 41715       | Seal Washer                | 47       | 40152       | Washer                          |
| 13       | 26577       | Guide Bar  | 30       | 26697       | Bulk Head Fitting          | 48       | 26997       | Screw                           |
| 14       | 79965       | Screw #10 - 32 x 1/2" (5)  | 31       | 26927       | Tubing                     | 49       | 40227       | Spring Washer                   |
| 15       | 49977       | Front Rail   | 32       | 27262       | Screen Assembly            | 50       | 40237       | Latch                           |
| 16       | 26652       | Oil Supply Clamp   | 33       | 26797       | Screw #10 - 32 x 5/16"     | 51       | 49472       | Spiral Pin                      |
|          |             |  | 34       | 26847       | Chip Pan Hanger Assembly   | 52       | 42027       | Handwheel Kit                   |
|          |             |  | 35       | 26817       | Chip Pan Bracket (2)       |          |             |                                 |

†See Service Notes

**1406 Folding Wheel Stand**



**NOTE: Order parts by Catalog Number only.  
DO NOT order by Reference Number.**

| Ref. No. | Catalog No. | Description                     |
|----------|-------------|---------------------------------|
| —        | 20105       | 1406 Folding Wheel Stand        |
| 1        | 51777       | Crank Handle                    |
| 2        | 51782       | Screw Shaft                     |
| 3        | 54312       | Flat Washer (2)                 |
| 4        | 36347       | Nylon Bearing                   |
| 5        | 36352       | Rear Handle                     |
| 6        | 45337       | Brace                           |
| 7        | 54300       | Roll Pin 1/4" x 1 1/2"          |
| 8        | 46775       | Screw 1/4" - 20 x 1 3/4" (4)    |
| 9        | 26947       | Flat Washer 1/4" (4)            |
| 10       | 36367       | Mounting Rail (2)               |
| 11       | 83325       | Roll Pin 3/16" x 1 3/8" (2)     |
| 12       | 36377       | Roller (2)                      |
| 13       | 36382       | Yoke Pin (2)                    |
| 14       | 51787       | Traverse Yoke                   |
| 15       | 36312       | Mounting Rail Cap (2)           |
| 16       | 36417       | Pivot Assembly Cap (4)          |
| 17       | 51792       | Leg Handle                      |
| 18       | 51797       | Pivot Assembly                  |
| 19       | 36412       | Pivot Shaft                     |
| 20       | 83420       | Flat Washer 1/2" (2)            |
| 21       | 47030       | Cotter Pin 1/8" x 1" (4)        |
| 22       | 93325       | Wheel (2)                       |
| 23       | 45342       | Groove Pin (2)                  |
| 24       | 80045       | Hex Bolt 3/8" - 16 x 3 1/4" (2) |
| 25       | 41582       | Washer-Int. Tooth (2)           |
| 26       | 35882       | 1460 Oil Pan Cover              |
| 27       | 36447       | Tubing                          |
| 28       | 36442       | Elbow Fitting                   |

